



infor

SUPPLY CHAIN

Infor Nexus Live Tracking

Real-time visibility goes global

Real-time visibility into goods in transit enables global supply chains to make critical improvements in performance, agility, and end-customer experience. Infor® Nexus Live Tracking offers visibility in full context with detailed order and item associations to dramatically increase the value and business benefits that can be reaped from widely available carrier tracking data. On a single network platform, Live Tracking offers mapping and location-driven ETAs for ocean, truckload, and air modes with extensive support for independent tracking sensors often used with high-value shipments. End-to-end supply chain awareness shows not only where each shipment is, but what it means to your business operations.

Live Tracking for shipment visibility

Shipment visibility with Infor Nexus is multi-dimensional—merging essential event updates with order- and item-level data and real-time visibility to tracked shipments. With available carrier GPS data and location-driven ETA projections across ocean, road, and air modes, Live Tracking transforms dots on a map into actionable insight about partner, carrier, and even 3PL performance. Location-based in-transit visibility made possible through Internet of Things (IoT) technology enriches order tracking and improves supply chain performance.

In addition, Live Tracking:

- Enables management by exception through timely, accurate alerts, freeing your workforce to focus on more important tasks
- Improves receipt of goods with dynamically updated ETAs for warehouses to align labor
- Provides improved views to inventory in transit and earlier exception alerts

Multimodal coverage

Globalized supply chain visibility is a modern connectivity challenge. That's why the Infor Nexus network platform covers all the primary modes and tracking options for critical product flows around the world, including: maritime vessels; heavy air freight; truck carriage; and shipment-specific sensors for loads, containers, trailers, and more.

IoT data increases business intelligence when delivered with purchase order and supplier data, linking origins to final destinations and end customers.

Live Tracking components include:

- Global, zoomable maps with detail and summary views
- Current weather and precipitation map layers
- Live Ocean for worldwide cargo vessel tracking
- Live Road for truckload coverage in North America and Europe, with carrier options for other regions
- Live Sensor for shipment or container-specific monitoring
- Live Air for heavy air freight tracking

Live Ocean

The Automatic Identification System (AIS) for marine traffic is the basis for real-time visibility data on the important ocean transport legs of supply chain product flows. Live Ocean is a standard component of our shipment visibility solution when ocean freight is tracked.

Features include:

- Accessibility for all commercial ocean-going vessels
- Data: Course, latitude/longitude, speed, ports of call, breadcrumbs, distance to, distance from, and ETA
- All shipments on a given vessel can be color-coded individually by lateness to final destination delivery
- ETA exception tracking and alerts
- User-configurable radial geo-fencing at named ports, with alerts

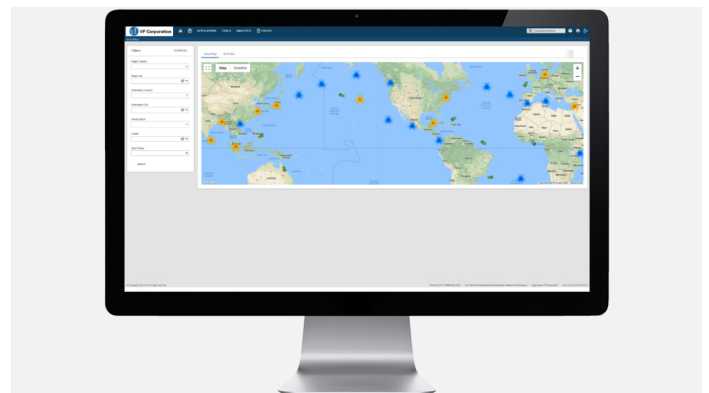
Live Road

Infor Nexus connects to multiple sources of real-time, direct truckload tracking data. All options benefit from the solution's order-centric business context for actionable supply chain information. Direct carrier system integration is optional, or choose Nexus network connectivity to GPS data services for truck transport coverage in North America and Europe. Per customer, existing truck visibility data services can also be integrated for single-platform visibility access.

Features include:

- Tens of thousands of trucking companies accessible worldwide with on-going network expansion
- Data: Truck ID, direction, latitude/longitude, speed, breadcrumbs, distance to, distance from, and ETA
- All loads for the enterprise moving on a given truck can be identified and color-coded individually by lateness to final destination delivery
- Easy carrier onboarding for coverage expansion
- Automated arrival and departure events triggered by system geo-fences
- ETA exception tracking and alerts, projections adjusted for traffic, weather impacts
- European data sources compliant with GDPR privacy laws

Live Ocean



Live Sensor

Pallet, package, carton, and trailer/container-level tracking and monitoring sensors are increasingly used for high-value products and cold-chain integrity. Live Sensor integrates almost any kind of real-time sensor or IoT data feed with global, multi-modal carrier tracking for comprehensive supply chain visibility. Get more actionable insight and more advanced analytics capability from tracking data with Live Sensor.

Features include:

- Support for permanent pallet sensors; or portable, one-time use or reusable package/container sensors
- Widely configurable data elements can include: Latitude/longitude, missing pallets, sensor battery life, geo-fence deviations, latent cargo, temperature, impact, and breadcrumbs of shipment travel overland
- Sensors in use can be color-coded individually on maps by disposition (in-transit, intact arrival, battery health, lost receiver, etc.), and event type (departure, overdue departure, geofence deviation, separation from other sensors in shipment, etc.)

Live Air

Shipments with all major air cargo service providers worldwide can be tracked real-time with Infor Nexus for end-to-end oversight. The potential for global weather and natural disasters to disrupt air flights makes Live Air a useful supply chain monitoring option.

Features include:

- Track cargo on any number of air-freight flights each day
- ETA of first flight and/or last flight of last leg to airport
- Data: Course, status, lateness and ETA, every 30 minutes
- Track cargo splits across flights

Live Tracking and business value

Whether a truck is being tracked by ELD, an ocean vessel via AIS, or a container or pallet by attached smart sensors, enhanced locational visibility improves views into product flows and offers more precise situational awareness to supply chain exceptions.

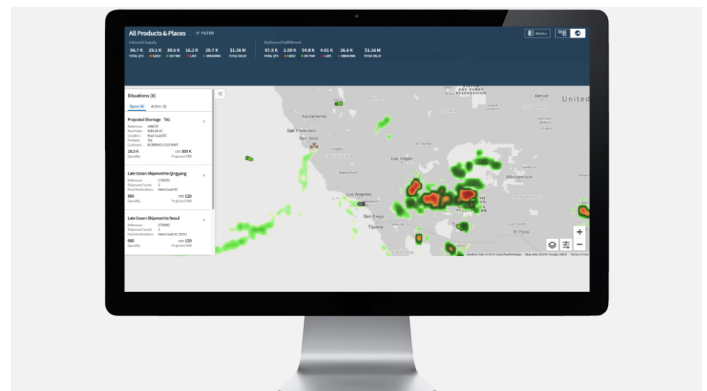
Real-time shipment visibility

Live Tracking comes with valuable order- and item-level context for shipments. Know specifically and immediately which customers or operations will be affected by transit disruptions, such as a vessel fire at sea or a highway traffic accident.

Real-time shipment visibility can help reduce inventory safety buffers, free-up working capital, more effectively plan warehouse receiving labor, and meet customer expectations for reliable and transparent service.

Contact Infor Nexus to learn more about logistics and order visibility solutions that expand real-time, end-to-end visibility and value with additional pre-transit and in-transit insight.

Real-time shipment visibility with weather



Supply chain visibility

Pre-transit delays can occur well in advance of expected shipment departures, so Infor Nexus offers visibility into vendor orders, confirmations and updates, out-of-stock parts and materials, plant shutdowns, holiday closures, and more through Infor Supply Management and broader supply chain visibility solutions. Upstream visibility means more time to uncover more cost-effective solutions than expedited shipping.

Artificial intelligence

Infor Coleman™ AI predicts delivery time to final destinations earlier in order cycles, before Live Tracking can begin, for improved inventory and replenishment planning.

Leverage next-level control over order and item detail

Infor Nexus order and item detail maximizes value from real-time visibility so Infor Nexus Live Tracking users can:

- Know whether products are going to be early or late compared to required-by order dates.
- See specific shipments, orders, and products identified with their required delivery dates, when multiple orders are moving on a single vessel or vehicle.
- See where the shipment began—where it is now; where it is going; where it will be handed off next (mode transition).
- Know who shipped it—who will ultimately receive it; who has it now; who touches it next; who owns the inventory.
- Collaborate with coworkers and partners real-time through an issue management feature for multi-party problems within a true multi-enterprise business network (MEBN).

Real-time visibility grows up

- Supply chain industry surveys, studies, and analysts confirm that improved visibility remains at the top of most-desired lists for supply chain leaders, despite years of enterprise resource planning (ERP) investment, supplier management efforts, TMS deployment, and network optimization strategies.
- Infor knows that the key to effective and end-to-end supply chain visibility lies in the intelligent harmonization of many different partner and service provider interactions and data streams, including Live Tracking.
- Live Tracking from Infor Nexus comes with native supply chain network capability and upstream and downstream process and system integration that is ready for tomorrow's markets.

Note: All Live Tracking services are dependent on carrier-specific and vehicle, vessel, and aircraft-level technical enablement to provide geo-positional data. Not all carriers may be able or willing to provide data suitable for location tracking.

[Learn more >](#)



Infor builds business software for specific industries in the cloud. With 17,000 employees and over 68,000 customers in more than 170 countries, Infor software is designed for progress. To learn more, please visit www.infor.com.

Follow us: [in](#) [f](#) [t](#)